

John Perry Primary School



Drug Education and Managing Drug Related Incidents Policy

Approved by: School Governing Body

Date: 6th February 2019

Last reviewed on: February 2019

Next review due by: February 2021

Drug Education and Managing Drug Related Incidents Policy

John Perry Primary School

This policy was written in consultation with staff, pupils, parents and governors.

1. School Statement

John Perry Primary School, recognises the harm that all drugs can have, be they illegal (cocaine, cannabis, heroin etc) legal (alcohol, cigarettes and solvents) or medicines. We aim, through this policy, and it's guidelines to provide clear and consistent procedures, which promote safety and good management.

2. Aims

- 2.1 To help young people resist drug misuse in order to achieve their full potential in society
- 2.2 To promote and safeguard health and safety of pupils and staff within the school
- 2.3 To provide a hierarchy of sanctions, for different levels of severity for different drug related incidents
- 2.4 To endorse a range of learning and supportive responses for those involved in an incident
- 2.5 To encourage an environment where a supportive response to incidents is not undermined by an unduly punitive response
- 2.6 To ensure this policy is fully implemented and disseminated to ensure understanding and adopting for all of those connected with the school; pupils, parents, teachers, governors and auxiliary staff.

3. Contents & Organisation of Drug Education

- 3.1 The school aims to provide a programme of drug education in line with the PSHE education scheme of work and the statutory Science Curriculum

At John Perry Primary School our PSHE lessons across the year groups for term 3 and 4 covers Health and Wellbeing. Teaching Drug & Alcohol Education with Confidence. Science curriculum covers animals including humans and recognise the impact of diet, exercise, drugs and lifestyle on the way their bodies function.

- 3.2 The school will provide monitoring data to the Local Authority on content and effectiveness of Drug education in line with the National Drug Strategy reporting process.

4. Managing Drug Related Incidents Procedure

Our definition of drug includes medicines, alcohol and tobacco it is therefore important that all aspects of an incident are considered. The needs and circumstances of the pupils are paramount.

We will consider each situation individually and recognise that a variety of actions in response may be necessary to drug related incidents as recommended by: DfE and ACPO drug advice for school: <https://www.gov.uk/government/publications/drugs-advice-for-schools>

If the situation leads to a medical emergency the school emergency aid procedures will be followed immediately.

In the absence of a medical emergency the drug co-ordinator will be informed and an appropriate response considered. We will refer to the *DfE and ACPO drug advice for schools* on responding to drug related incidents and in determining the response the implications of any action we take will be carefully considered. The focus of any response will be the student not the substance and we will seek to balance the interests of the individual, other members of the school community and the wider community.

Responses will be cross-referenced with related school policies such as:

- Behaviour
- Health and Safety
- Child Protection
- School Visits

Unless there are exceptional circumstances we will inform parents /carers at the earliest opportunity so that we can work together to support the pupil and to resolve difficulties.

We have a range of professional colleagues who can give or obtain advice and support in drug or alcohol related situations. These include the school's Education Welfare Officer, the local Police Liaison Officer, members of the local Youth Offending Team (whose roles include supporting young people at risk of offending) our local Drug and Alcohol agencies and counselling services. These colleagues can help with a needs assessment and support us in developing an appropriate response. The pupil/s will always be told when information is being passed on, in accordance with the school's policy on confidentiality.

Our aim is to enable all pupil to fulfil their potential. We will work with the pupil, their parents or carers and colleagues from other agencies to remove barriers to achievement and resolve any difficulties that exist. Drug related situations will be considered alongside other circumstances in the young person's life and not in isolation. We accept that it is never appropriate to respond in a way that is more punitive than that which might be considered by the police so that exclusion, whilst it remains an option, will be used as the very last resort.

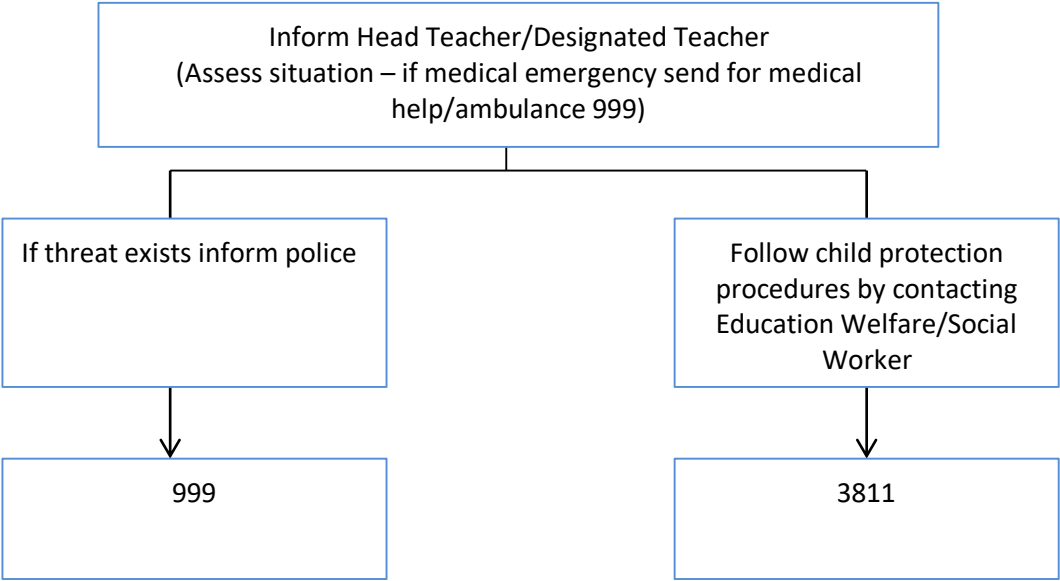
Should a substance suspected of being illicit be found on the school premises it will be handed to the headteacher and, in the presence of another member of staff placed in a sealed container in the school safe until it can be delivered to or collected by a police officer. S/he will also be involved in advising the school on the most appropriate response to the situation. The Local Authority School Drug Adviser and Drug & Alcohol Action Team are also able to provide guidance and advice.

All staff will be made aware of the legal constraints on gathering evidence and questioning those involved. They will not take action without involving the co-ordinator.

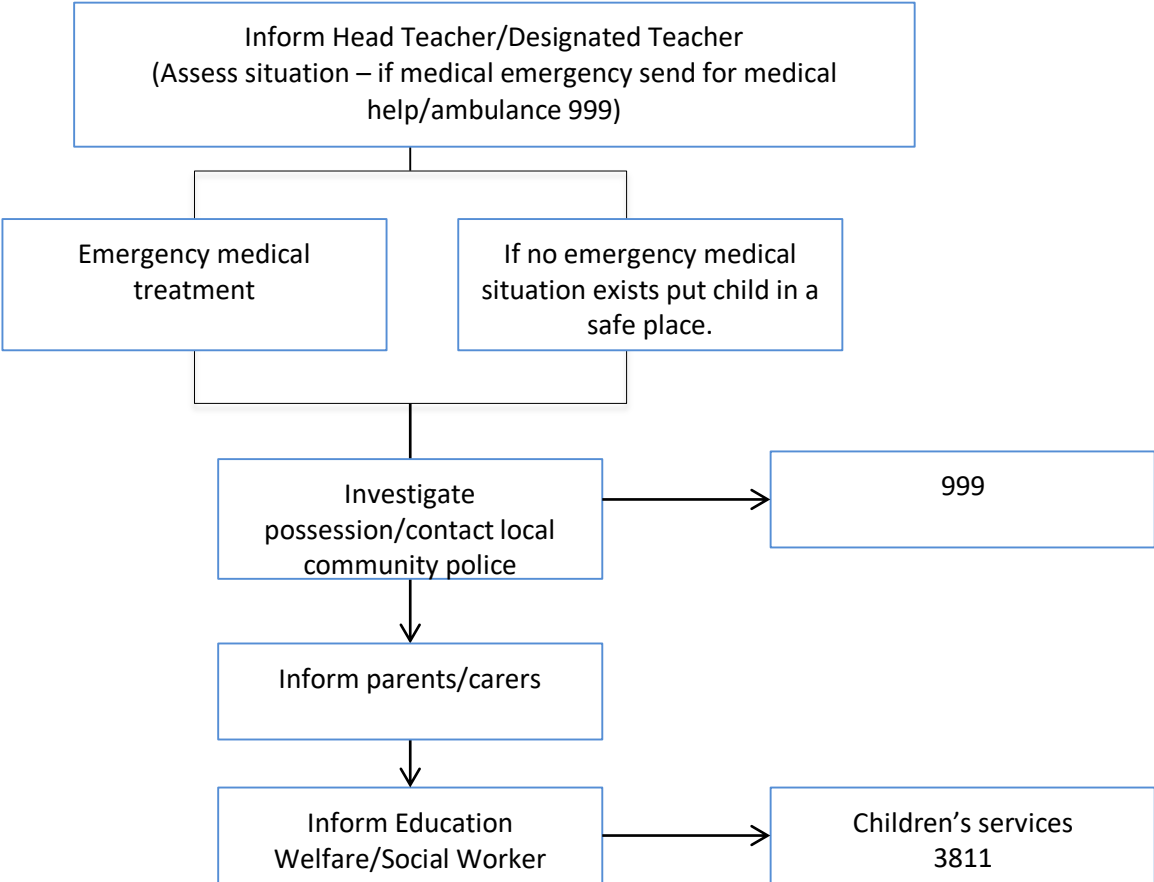
5. Smoking Statement

Smoking is not allowed on the school site. This includes electronic cigarettes.

Parents/Carers/Others under the influence of drugs /alcohol on school premises.

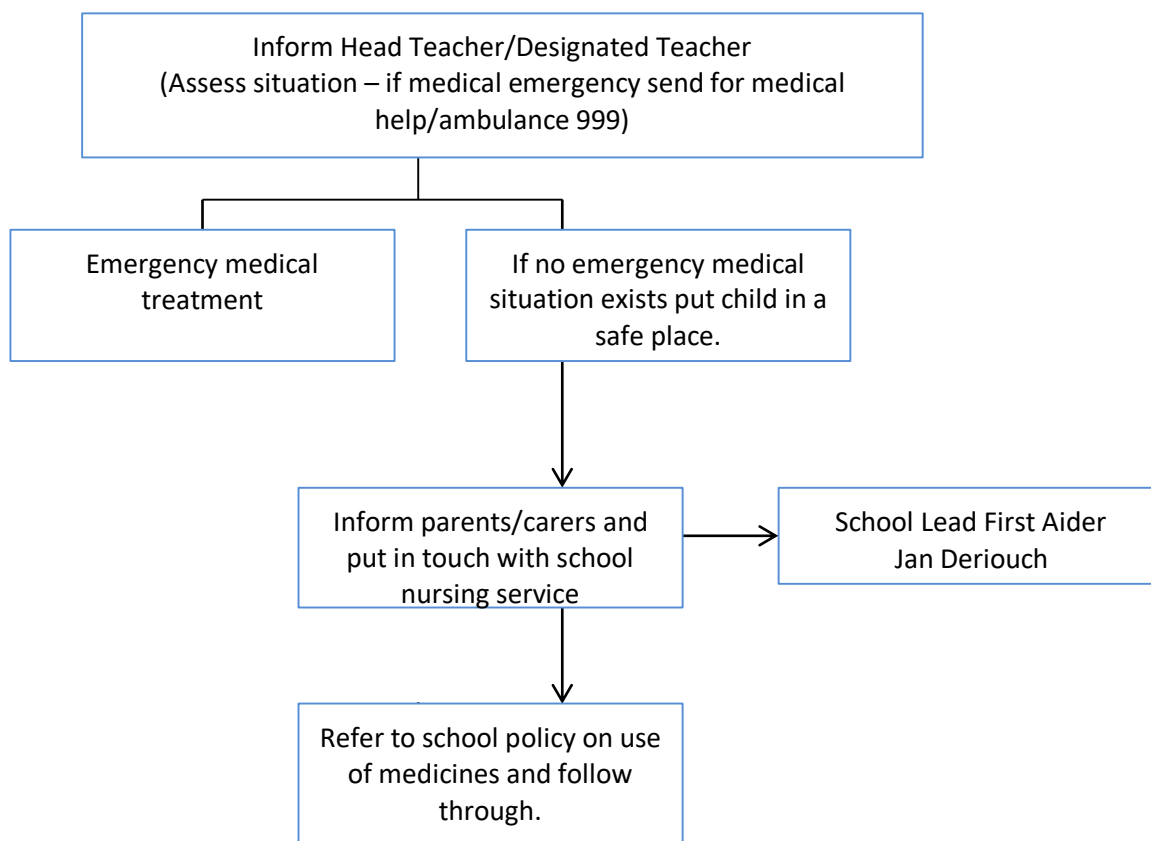


Pupil(s) under the influence of drugs /alcohol on school premises.

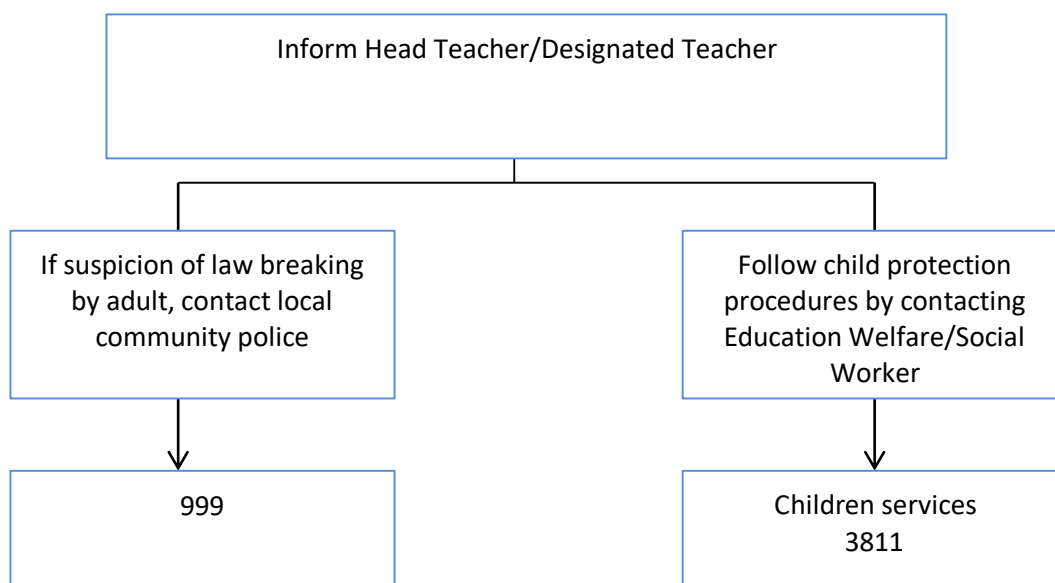


N.B. If tobacco is the drug used you may wish to follow school behavior/discipline policy.

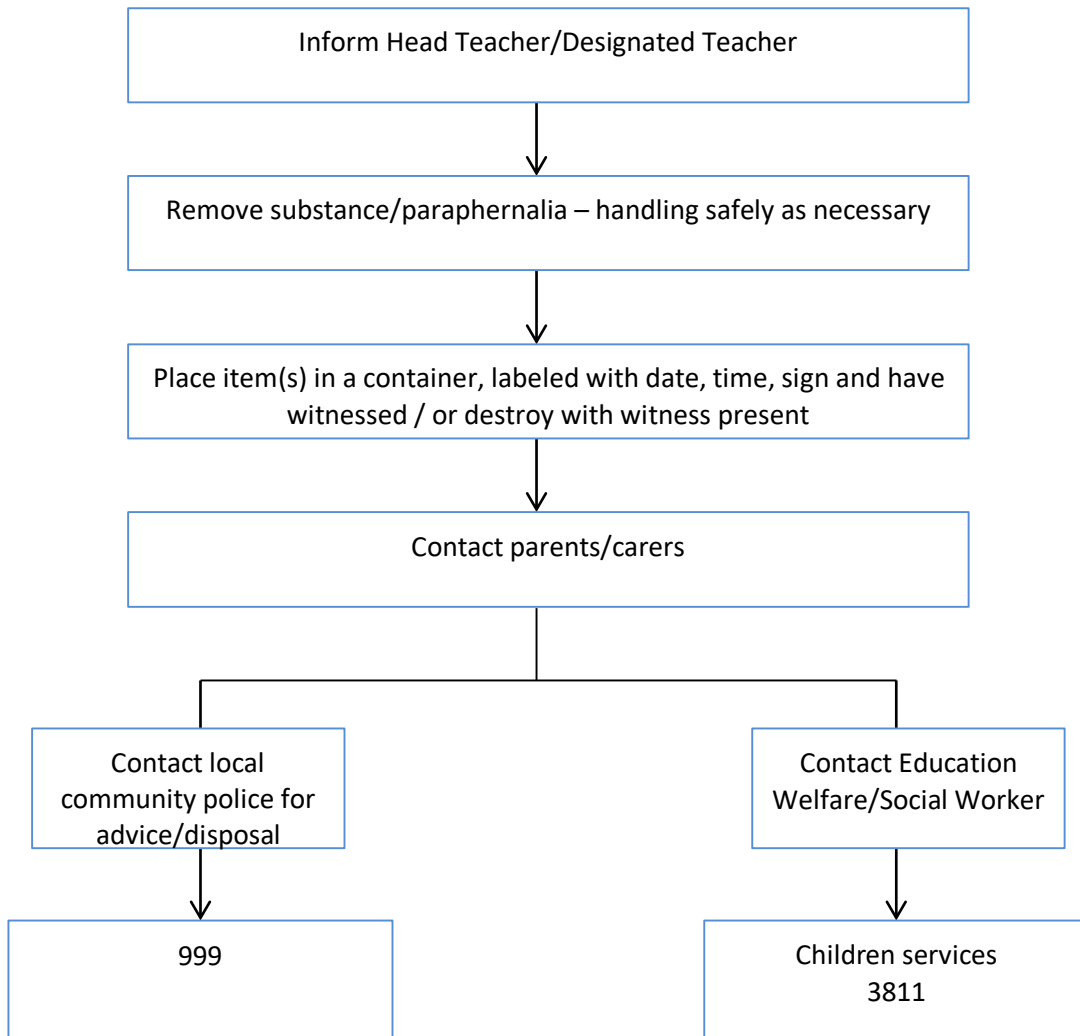
Pupils using medicines inappropriately on school premises.



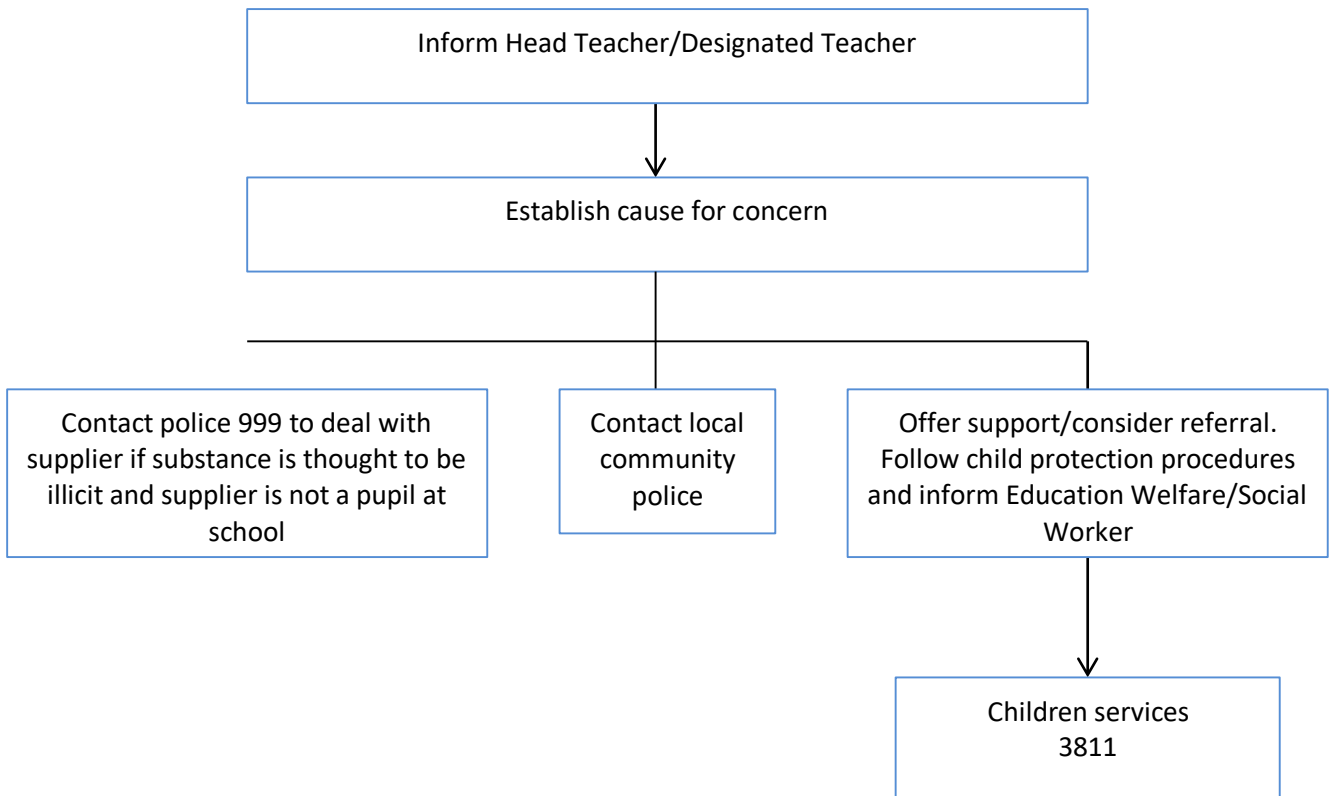
Pupils makes disclosure about their own or parents/carers/others use of drugs/alcohol



Drugs and / or paraphernalia found on pupils and/or premises



Supplying (drugs/alcohol/tobacco) by pupils/parents/carers/others



Date: February 2019

Review Date: February 2021